

Spitfire House, 34C Castle Close, Ventnor, PO38 1UD

Asking Price £615,000

EPC Rating: B Council Tax Band: D



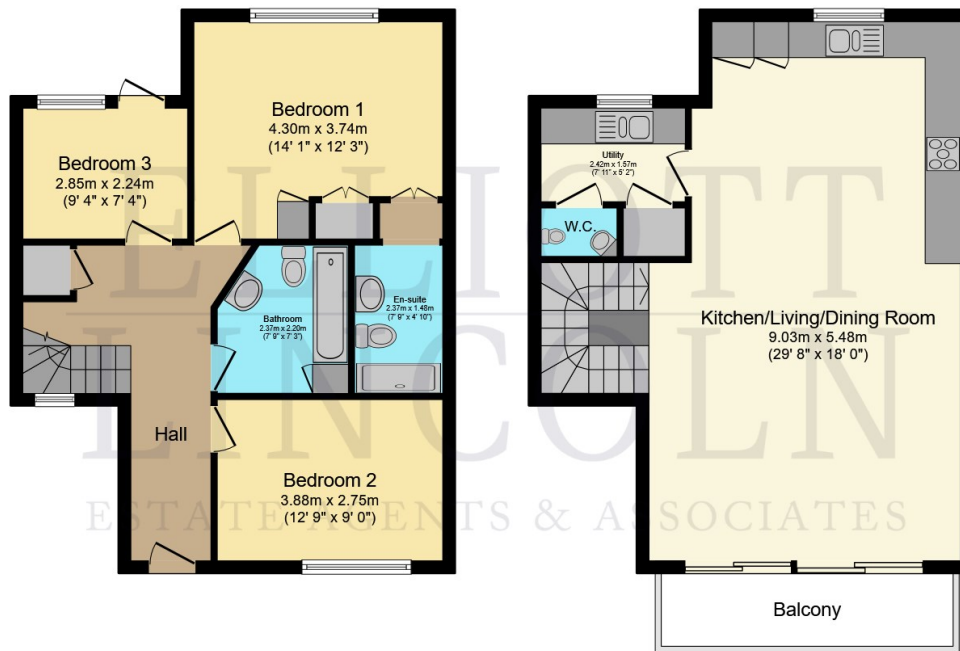
Modern, elegant and full of personality, Spitfire House is a beautifully designed upside-down coastal home enjoying sea views across the English Channel, generous open-plan living, three bedrooms, parking, balcony and a Mediterranean-inspired garden, all within easy reach of Ventnor town, the beach, Steephill Cove and Ventnor Botanic Garden.

**ELLIOTT
LINCOLN**
ESTATE AGENTS & ASSOCIATES

Reassuringly familiar, refreshingly new

Call or WhatsApp: 01983 642622
office@elliottlincoln.co.uk
www.elliottlincoln.co.uk

34C Castle Close, Ventnor, PO38 1UD



Ground Floor

First Floor

Total floor area: 108.6 sq.m. (1,169 sq.ft.)

This floor plan is for illustrative purposes only. It is not drawn to scale. Any measurements, floor areas (including any total floor area), openings and orientations are approximate. No details are guaranteed, they cannot be relied upon for any purpose and do not form any part of any agreement. No liability is taken for any error, omission or misstatement. A party must rely upon its own inspection(s). Powered by www.Propertybox.io

ELLIOTT & LINCOLN
ESTATE AGENTS & ASSOCIATES

Energy Efficiency Rating		Current	Potential
Very energy efficient - lower running costs			
(92 plus)	A		
(81-91)	B	83	
(69-80)	C		
(55-68)	D		
(39-54)	E		
(21-38)	F		
(1-20)	G		
Not energy efficient - higher running costs			
England & Wales		EU Directive 2002/91/EC	